

Overview

Access to the web console is limited to authorized users via role based access controls.

Roles are fully configurable and setup by customers to meet their individual requirements. For example, roles could be based on job function, application, geography or any other arbitrary grouping the customer requires.

Staff are assigned one or more roles and through those role assignments acquire the permissions to view report content and service delivery infrastructure.

Demonstration Environment

The demonstration environment can be accessed at:

<http://portal.fs.com.au>

This environment comprises a mix of UNIX, Linux and Windows servers located at our Sydney office plus links to a number of commercial websites.

The demonstration environment is 'real' insofar as the monitoring environment is live and represents a range of IT infrastructure used by Functional Software.

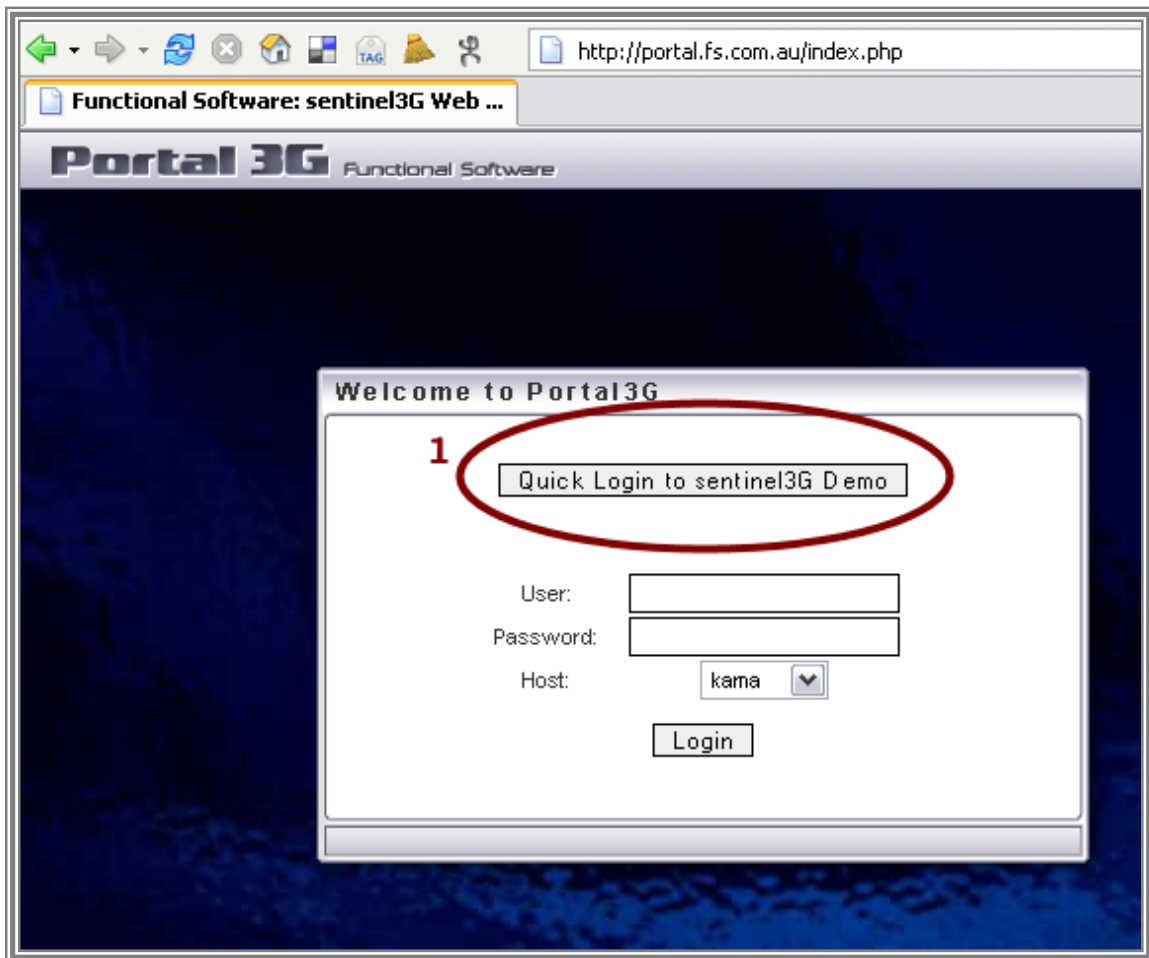
However, note that in some cases data is not being collected (so there will be no data to display) and some thresholds have deliberately been set low to illustrate alerting and alarming functionality... so yes... we know some of our file systems are full

Login

To login to the system infrastructure monitoring demo click the "Quick Login to sentinel3G Demo" ¹ button. [see Image next page]

This will automatically insert the User and Password details for the IT infrastructure and web monitoring demonstration environment and sign you in.

During initial login there will be a slight delay as monitoring information is retrieved from the demonstration environment. This delay is caused by the need to retrieve large amounts of data up-front to build menus and other structures. After this initial load, only changes are transferred across the network.



Note that the portal3G technology enables us to display multiple panels or 'windows' all within a single browser. As such, portal3G controls need to be used to navigate within the web interface to access these multiple windows.

REMINDER: Functional Software strongly recommends using the built in sub-window navigation to move through the demo. In many cases using the browser navigation functions will have unexpected results.

Interface

The initial screen displays 3 panels:

- I. Portal3G Menu
 - This is the main navigation panel
 - It contains multiple customer configurable tabs
 - The demo is setup with 3 tabs

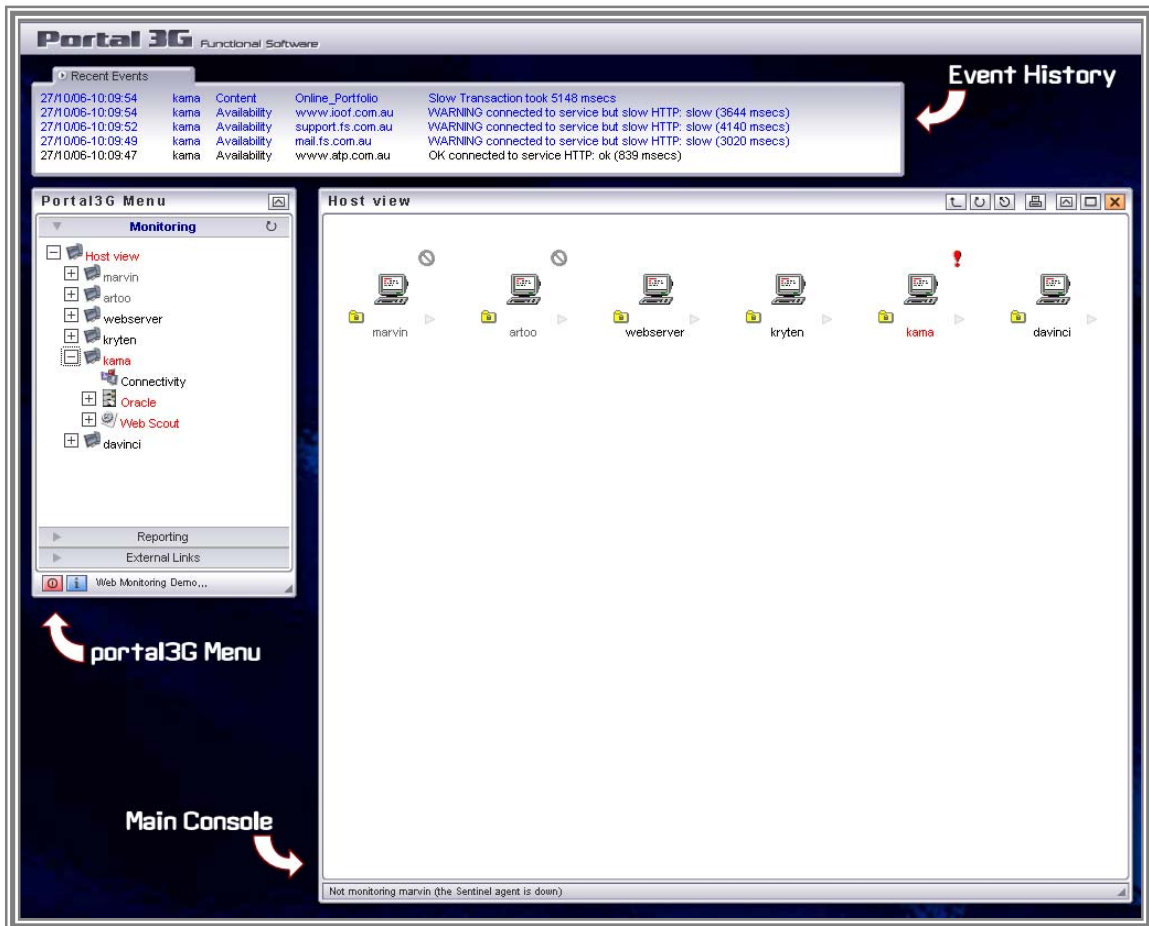
- Monitoring - Shows OS, DB, Application and Network infrastructure
- Reporting – Shows Summaries and Reports
- External Links – User definable links and information

II. Host View

- Default console view for IT infrastructure
- Click on icon to drill down
- Note overlay icons and status information if you hover your cursor over an icon

III. A Recent Events Panel

- Shows the last 5 events to be logged
- Clicking on the small arrow icon to the left of the Recent Events tab will display a complete Event History

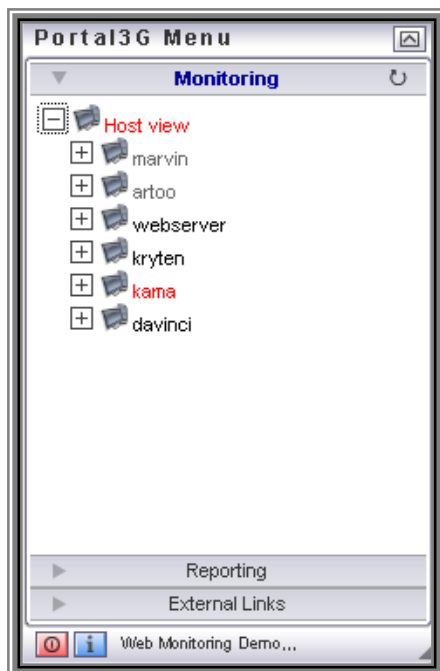


Navigation

The main panels are all configurable on a per-user basis. For example, not all users would require the Event History panel, or the user may only have access to view certain reports.

For the demonstration, we have set the menu up with three tabs: Monitoring, Reporting and External Links.

Monitoring



Displays a list of hosts that are currently being monitored. You can use the tree-menu to navigate directly to a problem in this panel, or use any point of the menu to jump to in the main console window.

Also displays a list of known hosts that are not currently being monitored, either through intent or accident.

Shows the highest alert state for that host. This state is propagated all the way to the top, so a simple glance at the very top level will alert you to the presence of any problems, across your entire system

Reporting

Includes a Host Summary and an Exception Summary. This allows a very quick overview of your entire system

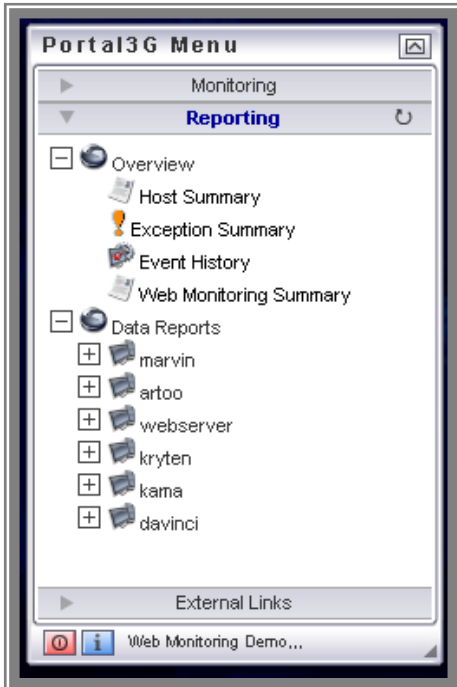
The Exception summary is a filtered Host Summary that shows only those hosts and sentries that are in a non-normal state.

While in the Summary screen, you can click on sections to hide/view a more detailed analysis of the problem.

You can use the 'config' button in the top right of the Host or Exception Summaries to streamline your overview. You can limit the view by Class, Host or Severity, to enable you to see only what you want to see.

The Web Monitoring Summary is similar in concept to the Host Summary, but provides an overview of internet based services, rather than machine based problems.

The Web monitoring summary is presented as a series of 'lights' that correspond to the colour of the current alert state. Clicking on any of these 'lights' will take you to a more detailed view of the problem.

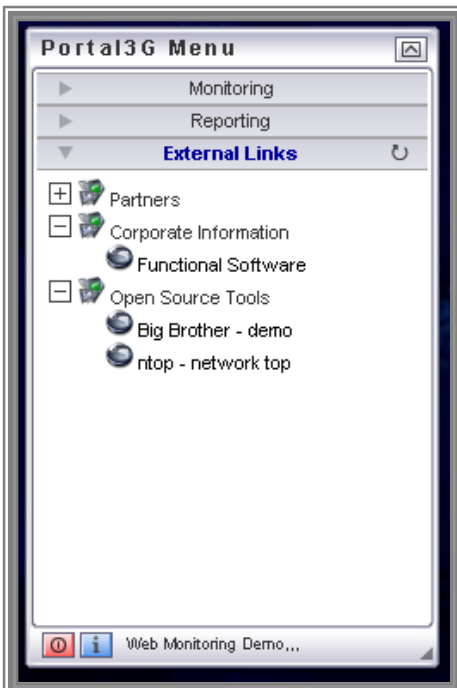


External Links

This banner is typically used to store commonly used URLs, informational pages, or anything else that is not generated by a Functional Software product.

Can be used as a security 'wrapper' to allow access to internal websites based on the roles system used in COSmanager products.

Can link in to 3rd party applications, making for a common interface for all your web-based tools.

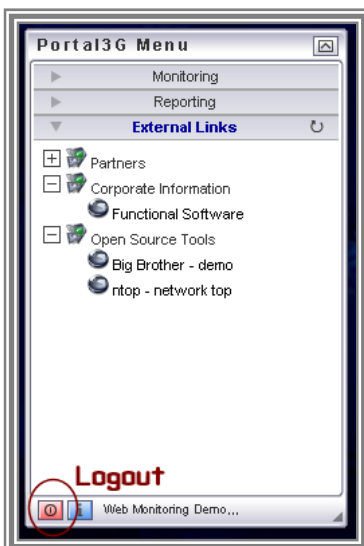


A new window will open for each link, unless that window has been previously used, at which point it will be overwritten

The view will refresh itself every two minutes by default. This is customer-configurable, but should be taken into account while viewing the demo.

All 'windows' with the exception of the Event History banner can be moved within the browser window as required.

All 'windows' with the exceptions of the Menu and Event History banner can be closed by clicking the 'X' icon in the top right. Any 'windows' that may be needed again will be re-opened automatically.



Once you are ready to leave the demo, simply click the red logout button in the bottom left of the main navigation menu. This will ask for confirmation, and then return you to the original login screen.